



Cameleon bv
Pastoor de Beeckstraat 1
5051 TJ Goirle
Tel: +31 (0) 13-8899073
www.cameleonpaint.com
Skype: cameleonpaint
KVK 54857686
VAT: 851467301B01

Cameleon Face and Bodyart products are available in following sizes:

Base line: 10 gram / 0.33 oz
32 grams / 1.13 oz
45 grams
Metal line: 10 gram / 0.33 oz
32 grams / 1.13 oz
Color Block 30 grams
Airline: 50 ml / 1.7 oz

Description of products: All products are Face and bodypaint products. Containers are plastic, Labels contain the ingredients for both EU and FDA Face Paint

HS/tarif code : 3304995000

Contains small parts that could cause a choking hazard. Avoid contact with fabrics. Remove with soap & water. Discontinue use if a rash develops. After washing some traces of color may remain for a short period of time. Paint contained in this package is hypo-allergenic & non toxic. Safe, when used as indicated.

Like most Make-up , dark colours on some people may leave a bit of residue on the skin for a few hours after washing . This also depends on the type of complexion of the person.

The data presented in this "material data safety sheet" represents the safety information on each component of our products. The components are a final commodity, easy on the skin, & wash off with soap & water.

Our ingredients meets cosmetic guidelines both in the United States & the European Community & is designed to be used on children under the age of 3 years old & adults.

BSE free / CMR certificate / free of animal testing we herewith confirm that our products listed here are

A. Free of any animal origin ingredients and BSE free

B. Not tested on animals

C. Does not contain any ingredients listed in the CMR category 1, 2 or 3

Article 4b of the Cosmetics Directive, prohibits the use in cosmetic products of substances

CMR Category 1, 2 and 3 classified in the Annex I of the Council Directive 67/548/EEC.



Material Safety Data Sheet

Msds

Date Of Printing: Dec. 10Th 2013

1 Chemical Product And Company Identification

Description: Face & Body Paints, Regular And Metal Colours Soluble In Water.
Product Type: Paste Cake Type Paints
Application: Colorful On Body And Face

Manufacturer/Supplier Information

Msds Prepared By:

Company Name: Cameleon Bv
Company Address: Pastoor De Beeckstraat 1, 5051 Tj Goirle, Netherlands
Tel: 31(0)138899073
Emergency Information: Tel: 31(0)138899073
Poison Control Center: Tel: 31(0)138899073
Tel: Tel: 31(0)138899073

2 Composition, Information On Ingredients

Paints Formulation With Wax, Petrolatum, Glycerin, Calcium Carbonate, Stearyl Alcohol, Sodium Benzoate, Acacia Senegal, Dextrin, Water And Pigments.
Contains No Hazardous Ingredients.

3 Hazards Identification

3.1 Emergency Overview

Appearance: Solid
Odor: N/a
Not A Health Hazard.
Not A Significant Fire Hazard

Hmis Rating: 4 = Severe
3 = Serious
Health: 0 2 = Moderate
Flammability: 0 1 = Slight
Reactivity: 0 0 = Minimal

3.2 Potential Health Effects

Immediate Hazards

Ingestion: No Hazards Known
If Inhaled: No Hazards Known
Skin Contact: No Hazards Known
Eye Contact: No Hazards Known

Delayed Hazards

No Hazards Known

4. First Aid Measures In Case Of:

Ingestion: Drink Plenty Of Water.
Get Medical Attention If Any Discomfort Continues
Eye Contact: Immediately Flush Eyes With Plenty Of Clean Water,
Take It Off From Eye.
Skin Contact: Wash With Soap And Water.
If Inhaled: Not Relevant.

5. Fire Fighting Measures									
Autoignition Temperature					Not Available				
Upper/Lower Flammable Limits					Not Available				
Upper/Lower Explosive Limits					Not Available				
Flash Point					>150°C				
Will Not Burn Unless					> 250°C				
Suitable Extinguishing Media: Carbon Dioxide, Powders, Water Spray									
6. Accidental Release Measures									
Protective Measures									
Personal; Children Under 6 Years Should Use With Adult Supervision.									
7. Handling And Storage									
7.1 Handling									
Handle In Accordance With Good Industrial Hygiene And Safety Practices.									
7.2 Storage									
Store In Dry Place dry and Dark									
Keep in original container.									
8. Exposure Controls/Personal Protection									
8.1 Exposure Controls									
No Special Control Measures Necessary Under Normal Conditions Of Use.									
8.2 Personal Protection									
No Special Protection Necessary.									
8.3 Exposure Guidelines									
None Established.									
Hygiene Requirements									
Do Not Eat, Drink Or Smoke While Working. Remove Soiled Or Soaked Clothing Immediately.									
9. Physical And Chemical Properties									
Percent Volatiles					<1.5% Water				
Ph @ 20°C					-----				
Specific Gravity					1.70±0.30G/MI				
Appearance					Colors Solid				
Autoignition Temperature					Not Available				
Melting Point					>250°C				
Vapor Density (Air=1)					-----				
Vapor Pressure Hpa @20°C					N/A Kg/Cm				
Evaporation Rate (Butyl Acetate=1)					Not Available				
Upper/Lower/Explosive Limits,% By Vol					Not Applicable				
Upper/Lower Flammable Limits					Not Applicable				
Flash Point					>150°C				
Freezing Point					----				
Odor					Not Available				
Odor Threshold. Ppm					Not Available				
Solubility In Water					Soluble				
Coefficient Of Water/Oil Distribution					Not Available				
10. Stability And Reactivity									
Normally Stable									
Conditions To Avoid:					Exposure in water or too wet				

Incompaibilities:				None known				
Decomposition Products May Lnclude:				Calcium oxide, water, carbon dioxide				
Hazardous Polymerization				Will not occur				
Other Hazards:				None known				
<hr/>								
11. Toxicological Lnfomation								
Conforms To Astm D-4236, En-71, Eu76/768/Eec And Fda.								
11. Ecological Lnfomation								
There Are No Data Available On The Preparation Itself.								
13. Disposal Considerztion								
Dispose Of According To Local,State/Provincial, And Federal Requirements.								
14. Transport Lnfomation								
14.1 Us: Department Of Transportation (Dot)								
These Products Are Solid Type, No Toxic Cosmetics Grade.								
Safety lata Transpotation By Air , By Sea, By Truck.								
14.2 Canadian Transportation Of Dangerous Goods (Tdg)								
Not Regulated								
15. Regulatory Information (Selected Regulations)								
15.1 U:S: Federal Regulations								
These Paint Products Conforms To The Health Requirements Of Astm D-4236 And Fda								
These Products Must Bear The Following Statement: " Conforms To Astm D-4236, En-71, Eu76/768/Eec And Fda								
15.2 Canadian Regulations								
Unknown								
15.3	These Paint Products Conforms To Eu 76/768/Eec, And Ce En-71.							
15.4	These Paint Products Pass -Bam, 8Th Edition By Fda.							
16. Other Information								
16.1	PAO CERTIFICATE of BEST USE BEFORE / WAREHOUSING TIME / PAO We herewith confirm that following products listed here PRODUCTS: Base Line, Metal Line, Color Block A. WAREHOUSE TIME / UNOPENED PRODUCTS : 36 months after production B. WAREHOUSE TIME / OPENED PRODUCTS : 24 months after first use C. PAO:12m RECYCLING CODE PP RAW MATERIAL SPECIFICATION: The raw material PP is free of nitrite							
16.2								

Item name: Aquacolor make-up(face & body) paints,		
Country of Original: China & Taiwan		
Composition of the products:		
BASE INGREDIENTS		
Paraffin	8002-74-2	20%
Petrolatum	8009-03-8	18%
Glycerin	56-81-5	10%
Calcium Carbonate	471-34-1	23,8%
	1317-65-3	
Stearyl Alcohol	112-92-5	4,4%
Phenoxyethanol	122-99-6	0,36%
Ethylhexylglycerin	70445-33-9	0,04%
Disodium EDTA	139-33-3	0,2%
Sodium Benzoate	532-32-1	0,2%
Acacia Senegal	9000-01-5	0,8%
Dextrin	9004-53-9	14,2%
Water		1%
Pigment		7%



Cameleon bv
 Pastoor de Beeckstraat 1
 5051 TJ Goirle
 Tel: +31 (0) 13 880072

tel. +31 (0) 15-0099073
www.cameleonpaint.com
Skype: cameleonpaint
KVK 54857686
VAT: 851467301B01

BASE LINE				
SKU	Name	FDA Name	CI/NO	Pigments
BL001	Fire red	D&C Red 7 CA Lake	15850:1	Red 5034
		D&C Yellow 6 Alum Lake	15985:1	Yellow 7009
BL002	Red Berry	D&C Red 6 NA Salt	15850	Red 6619
		D&C Red 7 CA Lake	15850:1	Red 30502
BL003	Blood Red	D&C Red 6 NA Salt	15850	Red 6619
		D&C Yellow 6 Alum Lake	15985:1	Yellow 7009
		D&C Red 7 CA Lake	15850:1	Red 30502
BL004	Banana Yellow	Titanium Dioxide	77891	TiO2
		FD&C Yellow 5 Alum Lake	19140:1	Yellow 09605
BL005	Midnight Blue	Titanium Dioxide	77891	TiO2
		Ultramarine blue	77007	Blue 302
		Ferric Ferrocyanide	77510	Blue 301C
		D&C Red 7 CA Lake	15850:1	Red 30502
BL006	Orange juice	Titanium Dioxide	77891	TiO2
		D&C Yellow 6 Alum Lake	15985:1	Yellow 7009
BL007	Sea Blue	Titanium Dioxide	77891	TiO2
		Ultramarine blue	77007	Blue 302
		Ultramarine blue	77007	Blue 5008
BL008	Frog green	Titanium Dioxide	77891	TiO2
		FD&C Yellow 5 Alum Lake	19140:1	Yellow 09605
		Ferric Ferrocyanide	77510	Blue 301C
		FD&C Blue 1 Alum Lake	42090:1	Blue 09903
		D&C Yellow 10 Alum Lake	47005:1	Yellow 7181
BL009	Clover Green	Titanium Dioxide	77891	TiO2
		FD&C Blue 1 Alum Lake	42090:1	Blue 09903
		Ferric Ferrocyanide	77510	Blue 301C
		D&C Yellow 10 Alum Lake	47005:1	Yellow 7181
BL0010	Teal	Titanium Dioxide	77891	TiO2
		FD&C Yellow 5 Alum Lake	19140:1	Yellow 09605
		D&C Yellow 10 Alum Lake	47005:1	Yellow 7181
		FD&C Blue 1 Alum Lake	42090:1	Blue 09903
BL0011	Purple Poison	Titanium Dioxide	77891	AFDC
		D&C Red 7 CA Lake	15850:1	Red 30502
		Ferric Ferrocyanide	77510	Blue 301C

		Manganese violet	77742	Violet 303A
		Ultramarine blue	77007	Blue 302
BL0012	Coffee Brown	Red Iron Oxide	77491	Red 5898AP
		Yellow Iron Oxide	77492	Yellow 1750
		Black Iron Oxide	77499	BK5000AP
BL0013	Strong Black	D&C Black 2	77266	LC902
BL0014	Black Velvet	Iron Oxide	77499	BK5000AP
BL0015	Pure White	Titanium Dioxide	77891	TiO2
BL0016	Cotton Candy	Titanium Dioxide	77891	TiO2
		D&C Red 7 CA Lake	15850:1	Red 30502
BL0017	Marshmallow	Titanium Dioxide	77891	TiO2
		D&C Red 7 CA Lake	15850:1	Red 30502
		D&C Red 6 NA Salt	15850:2	Red 7096
BL0018	Wicked Green	Titanium Dioxide	77891	TiO2
		D&C Yellow 10 Alum Lake	47005:1	Yellow 7181
		FD&C Yellow 5 Alum Lake	19140:1	Yellow 09605
		FD&C Blue 1 Alum Lake	42090:1	Blue 09903
BL0019	Robins Egg	Titanium Dioxide	77891	TiO2
		FD&C Blue 1 Alum Lake	42090:1	Blue 09903
		Ferric Ferrocyanide	77510	Blue 301C
BL0020	Absinthe	Titanium Dioxide	77891	AFDC
		D&C Yellow 10 Alum Lake	47005:1	Yellow 7181
		FD&C Yellow 5 Alum Lake	19140:1	Yellow 09605
		FD&C Blue 1 Alum Lake	42090:1	Blue 09903
BL0021	Celadon	Titanium Dioxide	77891	AFDC
		D&C Yellow 10 Alum Lake	47005:1	Yellow 7181
		FD&C Blue 1 Alum Lake	42090:1	Blue 09903
BL0022	Macchiato	Titanium Dioxide	77891	AFDC
		Yellow Iron Oxide	77492	Yellow 1750
		Red Iron oxide	77491	Red 2899AP
BL0023	Almond	Titanium Dioxide	77891	AFDC
		Yellow Iron Oxide	77492	Yellow 1750
BL0024	Espresso	Red Iron Oxide	77491	Red 5898AP
		Yellow Iron Oxide	77492	Yellow 1750
		Black Iron Oxide	77499	BK5000AP

BL0025	50	Titanium Dioxide	77891	TiO2
		D&C Black 2	77266	LC902
		Titanium Dioxide	77891	AFDC
		D&C Red 7 CA Lake	15850:1	Red 30502
		Ferric Ferrocyanide	77510	Blue 301C
		Manganese violet	77742	Violet 303A
		Ultramarine blue	77007	Blue 302
Conforms to ASTM D-4236, EN-71, EU76/768/EEC and FDA.				



Cameleon bv
 Pastoor de Beeckstraat 1
 5051 TJ Goirle
 Tel: +31 (0) 13-8899073
 www.cameleonpaint.com
 Skype: cameleonpaint
 KVK 54857686
 VAT: 851467301B01

METAL LINE				
SKU	Name	FDA Name	CI/NO	Pigments
ML001	Gothic Black	Mica	77019	Mica 1000
		Mica	77019	GP100 Mica
		Iron Oxide	77499	BK5000AP
ML002	Chrystal white	Mica	77019	GP105 Mica
		Titanium Dioxide	77891	TiO2
ML003	Shocking Pink	D&C Red 7 CA Lake	15850:1	Red 30502
		D&C Red 6 NA Salt	15850	Red 6619
		D&C Yellow 6 Alum Lake	15985:1	Yellow 7009
		FD&C Yellow 5 Alum Lake	19140:1	Yellow 09605
ML004	Steam Punk	Fe2O3	77491	GP553 Fe2O3
		Mica	77019	GP500 Mica
ML005	Oscar Gold	Mica	77019	GP300 Mica
		Titanium Dioxide	77891	TiO2
		Fe2O3	77491	Fe2O3
ML006	Sterling Silver	Mica	77019	GP125 Mica
		Titanium Dioxide	77891	TiO2
		Mica	77019	GP105 Mica
		Titanium Dioxide	77891	TiO2
		Mica	77019	UT-19013 Mica
		Titanium Dioxide	77891	Titanium dioxide
		D&C Black 2	77266	LC902
ML007	Purple Heart	Mica	77019	GP105 Mica
		Mica	77019	GP220 Mica
		Mica	77019	Mica 1000
		D&C Red 7 CA Lake	15850:1	Red 30502
		Ferric Ferrocyanide	77510	Blue 301C

SL001	Capulete
SL002	Magic stars
Conforms to ASTM D-4236, EN-71, EU76/7	

ML008	Thistle	Mica	77019	GP100 Mica
		D&C Red 7 CA Lake	15850:1	Red 30502
		Ferric Ferrocyanide	77510	Blue 301C
ML009	Rose Sugar	Mica	77019	GP504 Mica
		Mica	77019	GP220 Mica
		Mica	77019	N8000S Mica
		Ferric Ferrocyanide	77510	Blue 301C
		D&C Red 7 CA Lake	15850:1	Red 30502
ML010	Plum Fairy	Mica	77019	GP504 Mica
		Mica	77019	GP220 Mica
		Ferric Ferrocyanide	77510	Blue 301C
		D&C Red 7 CA Lake	15850:1	Red 30502
ML0011	Fleur de Lise	Mica	77019	GP330 Mica
		Mica	77019	GP311 Mica
		Pigment Green 17	77288	Green 6099HP
		Ferric Ferrocyanide	77510	Blue 301C
ML0012	Victorouse	GP100 Mica	12001-26-2	77019
		TiO2	13463-67-7	77891
		Blue 301C	25869-00-5	77510
Conforms to ASTM D-4236, EN-71, EU76/768/EEC and FDA.				

cameleon
professional body and facepaint make up

Cameleon bv
Pastoor de Beeckstraat 1
5051 TJ Goirle
Tel: +31 (0) 13-8899073
www.cameleonpaint.com
Skvne: cameleonpaint

Orype: Gannet Company

KVK 54857686

VAT: 851467301B01

Mica	77019	GP105 Mica
Titanium Dioxide	77891	TiO2
Mica	77019	GP100 Mica
D&C Red 7 CA Lake	15850:1	Red 30502
Ferric Ferrocyanide	77510	Blue 301C
Mica	77019	GP105 Mica
Titanium Dioxide	77891	TiO2
Mica	77019	GP100 Mica
Ferric Ferrocyanide	77510	Blue 301C
68/EEC and FDA.		

Special FX UV line		CI/NO CAS
Foxy orange	D&C Orange 5	596-03-2
	Calcium Carbonate	471-34-1
	Acacia Senegal Gum	1/5/00
	Glycerin	56-81-5
	Water	7732-18-5
	Methylparaben	99-76-3
Pink Flamingo	D&C Red 22	95917-83-2
	Calcium Carbonate	471-34-1
	Acacia Senegal Gum	1/5/00
	Glycerin	56-81-5
	Water	7732-18-5
	Methylparaben	99-76-3
		2321-07-5
Kryptonite	D&C Yellow 7	471-34-1
	FD&C Blue 1	1/5/00
	Calcium Carbonate	56-81-5
	Acacia Senegal Gum	7732-18-5
	Glycerin	99-76-3
	Water	
	Methylparaben	16,00%
Toxic yellow	D&C Yellow 7	30,00%
	Calcium Carbonate	16,00%
	Acacia Senegal Gum	16,00%
	Glycerin	12,99%
	Water	0,01%
	Methylparaben	0,01%
Electric	D&C Red 28	25,00%
	Calcium Carbonate	30,00%
	Acacia Senegal Gum	16,00%
	Glycerin	16,00%
	Water	12,99%
	Methylparaben	0,01%
Conforms to ASTM D-4236, EN-71, EU76/768/EEC and FDA.		

For Special FX only, not for cosmetic use!

COLOR BLOCK				
SKU	Name	FDA	CI/NO	Pigments
CB001	Roses	D&C Red 6 NA Salt	15850	Red 6619
		D&C Yellow 6 Alum Lake	15985:1	Yellow 7009
		D&C Red 7 CA Lake	15850:1	Red 30502
		D&C Red 7 CA Lake	15850:1	Red 5034
		D&C Yellow 6 Alum Lake	15985:1	Yellow 7009
		Titanium Dioxide	77891	TiO2
		D&C Red 6 NA Salt	15850:2	Red 7096
		FD&C Yellow 5 Alum Lake	19140:1	Yellow 09605
CB003	Jellyfish	Titanium Dioxide	77891	TiO2
		Ultramarine blue	77007	Blue 302
		Ferric Ferrocyanide	77510	Blue 301C
		D&C Red 7 CA Lake	15850:1	Red 30502
		D&C Red 6 NA Salt	15850:2	Red 7096
		Mica	77019	GP125 Mica
		Mica	77019	GP105 Mica
		Mica	77019	UT-19013 Mica
		D&C Black 2	77266	LC902
CB004	Snow Flake	Titanium Dioxide	77891	TiO2
		Ultramarine blue	77007	Blue 302
		Ferric Ferrocyanide	77510	Blue 301C
		D&C Red 7 CA Lake	15850:1	Red 30502
		Ultramarine blue	77007	Blue 302
		Ultramarine blue	77007	Blue 5008
		Mica	77019	GP125 Mica
		Mica	77019	GP105 Mica
		Mica	77019	UT-19013 Mica
		D&C Black 2	77266	LC902
		FD&C Blue 1 Alum Lake	42090:1	Blue 09903
		Ferric Ferrocyanide	77510	Blue 301C
CB005	Fresh grass	Titanium Dioxide	77891	TiO2
		FD&C Blue 1 Alum Lake	42090:1	Blue 09903
		Ferric Ferrocyanide	77510	Blue 301C
		D&C Yellow 10 Alum Lake	47005:1	Yellow 7181
		FD&C Yellow 5 Alum Lake	19140:1	Yellow 09605
		Ferric Ferrocyanide	77510	Blue 301C
		FD&C Blue 1 Alum Lake	42090:1	Blue 09903
		D&C Yellow 10 Alum Lake	47005:1	Yellow 7181
		FD&C Yellow 5 Alum Lake	19140:1	Yellow 09605
CB006	Shamrock	Titanium Dioxide	77891	TiO2
		Ultramarine blue	77007	Blue 302
		Ferric Ferrocyanide	77510	Blue 301C
		D&C Red 7 CA Lake	15850:1	Red 30502
		FD&C Blue 1 Alum Lake	42090:1	Blue 09903
		Ferric Ferrocyanide	77510	Blue 301C
		D&C Yellow 10 Alum Lake	47005:1	Yellow 7181
		D&C Yellow 10 Alum Lake	47005:1	Yellow 7181
		FD&C Yellow 5 Alum Lake	19140:1	Yellow 09605

		FD&C Blue 1 Alum Lake	42090:1	Blue 09903
		Mica	77019	GP300 Mica
		Fe2O3	77491	Fe2O3
		FD&C Yellow 5 Alum Lake	19140:1	Yellow 09605
CB009	Swan	D&C Black 2	77266	LC902
		Mica	77019	GP125 Mica
		Titanium Dioxide	77891	TiO2
		Mica	77019	GP105 Mica
		Mica	77019	UT-19013 Mica
		D&C Black 2	77266	LC902
		Mica	77019	GP105 Mica
CB0011	Rainbow WOW	Titanium Dioxide	77891	TiO2
		FD&C Blue 1 Alum Lake	42090:1	Blue 09903
		Ferric Ferrocyanide	77510	Blue 301C
		D&C Yellow 10 Alum Lake	47005:1	Yellow 7181
		FD&C Yellow 5 Alum Lake	19140:1	Yellow 09605
		FD&C Blue 1 Alum Lake	42090:1	Blue 09903
		FD&C Yellow 5 Alum Lake	19140:1	Yellow 09605
		D&C Yellow 6 Alum Lake	15985:1	Yellow 7009
		D&C Red 6 NA Salt	15850	Red 6619
		D&C Red 7 CA Lake	15850:1	Red 30502
CB0012	Poppy	Titanium Dioxide	77891	TiO2
		D&C Red 6 NA Salt	15850	Red 6619
		D&C Red 7 CA Lake	15850:1	Red 30502
		Mica	77019	GP300 Mica
		Fe2O3	77491	Fe2O3
		Mica	77019	Mica 1000
		Mica	77019	GP100 Mica
		CI Pigment Black 11	77499	BK5000AP
CB0013	Soul Fire	Titanium Dioxide	77891	TiO2
		Ultramarine blue	77007	Blue 302
		Ultramarine blue	77007	Blue 5008
		FD&C Yellow 5 Alum Lake	19140:1	Yellow 09605
		D&C Yellow 6 Alum Lake	15985:1	Yellow 7009
		D&C Red 6 NA Salt	15850	Red 6619
		D&C Red 7 CA Lake	15850:1	Red 30502
		Iron Oxide	77499	BK5000AP
CB0014	Princess Bride	Titanium Dioxide	77891	TiO2
		Mica	77019	GP105 Mica
		D&C Red 7 CA Lake	15850:1	Red 30502
		Ferric Ferrocyanide	77510	Blue 301C
		Manganese violet	77742	Violet 303A
		Ultramarine blue	77007	Blue 302
		Mica	77019	GP300 Mica
		Fe2O3	77491	Fe2O3
		Titanium Dioxide	77891	TiO2

CB015	Sunset	Ultramarine blue	77007	Blue 302
		Ferric Ferrocyanide	77510	Blue 301C
		D&C Red 7 CA Lake	15850:1	Red 30502
		FD&C Blue 1 Alum Lake	42090:1	Blue 09903
		Ferric Ferrocyanide	77510	Blue 301C
		Mica	77019	GP300 Mica
		Fe2O3	77491	Fe2O3
CB0017	Michele magic 2	D&C Red 7 CA Lake	15850:1	Red 5034
		D&C Yellow 6 Alum Lake	15985:1	Yellow 7009
		Titanium Dioxide	77891	TiO2
		FD&C Yellow 5 Alum Lake	19140:1	Yellow 09605
		D&C Yellow 10 Alum Lake	47005:1	Yellow 7181
		FD&C Yellow 5 Alum Lake	19140:1	Yellow 09605
		FD&C Blue 1 Alum Lake	42090:1	Blue 09903
		FD&C Blue 1 Alum Lake	42090:1	Blue 09903
		Ferric Ferrocyanide	77510	Blue 301C
		D&C Red 7 CA Lake	15850:1	Red 30502
		Ferric Ferrocyanide	77510	Blue 301C
		Manganese violet	77742	Violet 303A
		Ultramarine blue	77007	Blue 302
CB0018	Jelly Bean	Titanium Dioxide	77891	TiO2
		D&C Red 7 CA Lake	15850:1	Red 30502
		D&C Red 6 NA Salt	15850:2	Red 7096
		Titanium Dioxide	77891	TiO2
		FD&C Yellow 5 Alum Lake	19140:1	Yellow 09605
		D&C Yellow 10 Alum Lake	47005:1	Yellow 7181
		FD&C Yellow 5 Alum Lake	19140:1	Yellow 09605
		FD&C Blue 1 Alum Lake	42090:1	Blue 09903
		FD&C Blue 1 Alum Lake	42090:1	Blue 09903
		Ferric Ferrocyanide	77510	Blue 301C
CB0019	Fairy Dust	Titanium Dioxide	77891	AFDC
		Ferric Ferrocyanide	77510	Blue 301C
		Manganese violet	77742	Violet 303A
		Ultramarine blue	77007	Blue 302
		D&C Red 7 CA Lake	15850:1	Red 30502
		D&C Red 6 NA Salt	15850:2	Red 7096
		D&C Yellow 6 Alum Lake	15985:1	Yellow 7009
CB0020	Venus	Mica	77019	GP330 Mica
		Mica	77019	GP311 Mica
		Pigment Green 17	77288	Green 6099HP
		Ferric Ferrocyanide	77510	Blue 301C
		Mica	77019	GP300 Mica
		Titanium Dioxide	77891	TiO2
		Fe2O3	77491	Fe2O3
		Mica	77019	GP504 Mica
		Mica	77019	GP220 Mica
		Mica	77019	N8000S Mica
		Ferric Ferrocyanide	77510	Blue 301C
		D&C Red 7 CA Lake	15850:1	Red 30502

		Mica	77019	GP504 Mica
		Mica	77019	GP220 Mica
		Ferric Ferrocyanide	77510	Blue 301C
CB0021	Olivia	D&C Red 6 NA Salt	15850	Red 6619
		D&C Yellow 6 Alum Lake	15985:1	Yellow 7009
		Titanium Dioxide	77891	TiO2
		D&C Red 7 CA Lake	15850:1	Red 30502
CB0022	Enli	Titanium Dioxide	77891	TiO2
		D&C Red 6 NA Salt	15850:2	Red 7096
		D&C Red 6 NA Salt	15850	Red 6619
		D&C Red 7 CA Lake	15850:1	Red 30502
CB0023	Evening	Titanium Dioxide	77891	TiO2
		FD&C Yellow 5 Alum Lake	19140:1	Yellow 09605
		FD&C Blue 1 Alum Lake	42090:1	Blue 09903
		Ferric Ferrocyanide	77510	Blue 301C
		D&C Yellow 10 Alum Lake	47005:1	Yellow 7181
		AFDC	77891	Titanium Dioxide
		D&C Red 7 CA Lake	15850:1	Red 30502
		Blue 301C	77510	Ferric Ferrocyanide
		Violet 303A	77742	Manganese violet
		Blue 302	77007	Ultramarine blue
		FD&C Yellow 5 Alum Lake	19140:1	Yellow 09605
		Ferric Ferrocyanide	77510	Blue 301C
		FD&C Blue 1 Alum Lake	42090	Blue 09903
		D&C Yellow 10 Alum Lake	47005:1	Yellow 7181
CB0024	Siren	Ultramarine blue	77007	Blue 302
		Ultramarine blue	77007	Blue 5008
		FD&C Blue 1 Alum Lake	42090:1	Blue 09903
		Ferric Ferrocyanide	77510	Blue 301C
		D&C Yellow 10 Alum Lake	47005:1	Yellow 7181
		Titanium Dioxide	77891	AFDC
		D&C Yellow 10 Alum Lake	47005:1	Yellow 7181
		FD&C Blue 1 Alum Lake	42090:1	Blue 09903
		FD&C Yellow 5 Alum Lake	19140:1	Yellow 09605
		Ferric Ferrocyanide	77510	Blue 301C
CB0025	Paintopia	Titanium Dioxide	77891	TiO2
		FD&C Yellow 5 Alum Lake	19140:1	Yellow 09605
		D&C Yellow 6 Alum Lake	15985:1	Yellow 7009
		Red Iron Oxide	77491	Red 5898AP
		Yellow Iron Oxide	77492	Yellow 1750
		Black Iron Oxide	77499	BK5000AP
CB0026	Lovebird	D&C Black 2	77266	LC902
		D&C Red 6 NA Salt	15850	Red 6619
		D&C Yellow 6 Alum Lake	15985:1	Yellow 7009
		D&C Red 7 CA Lake	15850:1	Red 30502
		Titanium Dioxide	77891	TiO2

CB0027	Gypsy	Titanium Dioxide	77891	TiO2
		FD&C Blue 1 Alum Lake	42090:1	Blue 09903
		Ferric Ferrocyanide	77510	Blue 301C
		D&C Red 7 CA Lake	15850:1	Red 30502
		FD&C Yellow 5 Alum Lake	19140:1	Yellow 09605
CB0028	African Sunset By YC Art	Titanium Dioxide	77891	TiO2
		FD&C Yellow 6 Alum Lake	15985:1	Yellow 7009
		D&C Red 7 CA Lake	15850:1	Red 30502
		D&C Red 6 NA Salt	15850	Red 6619
CB0030	Retro	Titanium Dioxide	77891	TiO2
		FD&C Blue 1 Alum Lake	42090:1	Blue 09903
		Yellow Iron Oxide	77492	Yellow 1750
		Ferric Ferrocyanide	77510	Blue 301C
		Red Iron Oxide	77491	Red 5898AP
		Black Iron Oxide	77499	BK5000AP
CB0031	Punky Debz	Titanium Dioxide	77891	TiO2
		FD&C Yellow 5 Alum Lake	19140:1	Yellow 09605
		Titanium Dioxide	77891	AFDC
		D&C Yellow 10 Alum Lake	47005:1	Yellow 7181
		FD&C Yellow 5 Alum Lake	19140:1	Yellow 09605
		FD&C Blue 1 Alum Lake	42090:1	Blue 09903
		D&C Red 7 CA Lake	15850:1	Red 30502
		Ferric Ferrocyanide	77510	Blue 301C
		Manganese violet	77742	Violet 303A
		Ultramarine blue	77007	Blue 302
CB0032	Pansy	Titanium Dioxide	77891	TiO2
		Titanium Dioxide	77891	AFDC
		D&C Red 7 CA Lake	15850:1	Red 30502
		Ferric Ferrocyanide	77510	Blue 301C
		Manganese violet	77742	Violet 303A
		Ultramarine blue	77007	Blue 302
		FD&C Yellow 5 Alum Lake	19140:1	Yellow 09605
* Conforms to ASTM * Conforms to ASTM D-4236, EN-71, EU76/768/EEC and FDA.				
But need warning: not use around eyes and lips to long.				



Cameleon bv
 Pastoor de Beekstraat 1
 5051 TJ Goirle
 Tel: +31 (0) 13-8899073
 www.cameleonpaint.com
 Skype: cameleonpaint
 KVK 54857686
 VAT: 851467301B01

Regular Colors			
Color	Ingredients	CAS No.	CI No.
Black / Raven	Iron Oxides	1332-37-2	77491
	Water	7732-18-5	
	Calcium Carbonate	471-34-1	
	Acacia Senegal Gum	1/5/00	
	Glycerin	56-81-5	
White / Snowwhite	Titanium Dioxide	13463-67-7	77891
	Water	7732-18-5	
	Calcium Carbonate	471-34-1	
	Acacia Senegal Gum	1/5/00	
	Glycerin	56-81-5	
	Talc	14807-96-6	
Yellow / Canary	FD&C Yellow No.5		
	Titanium Dioxide	13463-67-7	77891
	Water	7732-18-5	
	Calcium Carbonate	471-34-1	
	Acacia Senegal Gum	1/5/00	
	Glycerin	56-81-5	
Dark Blue / Prussian	Ultramarines		
	D&C Red No.7		
	Iron Oxides	1332-37-2	77491
	Water	7732-18-5	
	Calcium Carbonate	471-34-1	
	Acacia Senegal Gum	1/5/00	
	Glycerin	56-81-5	
Dark Green / Pine	Iron Oxides	1332-37-2	77491
	FD&C Blue No.1		
	FD&C Yellow No.5		
	Water	7732-18-5	
	Calcium Carbonate	471-34-1	
	Acacia Senegal Gum	1/5/00	
	Glycerin	56-81-5	
Dark Red / Red Devil	FD&C Red No.40		
	Water	7732-18-5	
	Acacia Senegal Gum	1/5/00	
	Glycerin	56-81-5	
	Talc	14807-96-6	
Pizzah / Purple	Ultramarines	1302-83-6	77007
	D&C Red No.7	4/9/81	15850
	Iron Oxides	1332-37-2	77491
	Talc	14807-96-6	
	Acacia Senegal Gum	1/5/00	
	Glycerin	56-81-5	
	Water	7732-18-5	
Baby Blue's Brother/ Light blue	FD&C Blue No.1	3844-45-9	42090
	Titanium Dioxide	13463-67-7	77891
	Talc	14807-96-6	
	Acacia Senegal Gum	1/5/00	
	Glycerin	56-81-5	
	Water	7732-18-5	



Cameleon bv
 Pastoor de Beeckstraat 1
 5051 TJ Goirle
 Tel: +31 (0) 13-8899073
 www.cameleonpaint.com
 Skype: cameleonpaint
 KVK 54857686
 VAT: 851467301B01

Metal Colors			
Color	Ingredients	CAS No.	CI No.
Midas Gold	Water	7732-18-5	
	Calcium Carbonate	471-34-1	
	Acacia Senegal Gum	1/5/00	
	Glycerin	56-81-5	
Cabaret Bling /rose	Water	7732-18-5	
	Calcium Carbonate	471-34-1	
	Acacia Senegal Gum	1/5/00	
	Glycerin	56-81-5	
UBPL Silver	Water	7732-18-5	
	Calcium Carbonate	471-34-1	
	Acacia Senegal Gum	1/5/00	
	Glycerin	56-81-5	
Jerricho Copper	Water	7732-18-5	
	Calcium Carbonate	471-34-1	
	Acacia Senegal Gum	1/5/00	
	Glycerin	56-81-5	

Metal Colors				
Color	Ingredients	CAS No.	CI No.	
Midas Gold	Water	7732-18-5		
	Calcium Carbonate	471-34-1		
	Acacia Senegal Gum	1/5/00		
	Glycerin	56-81-5		
Cabaret Bling /rose	Water	7732-18-5		
	Calcium Carbonate	471-34-1		
	Acacia Senegal Gum	1/5/00		
	Glycerin	56-81-5		
UBPL Silver	Water	7732-18-5		
	Calcium Carbonate	471-34-1		
	Acacia Senegal Gum	1/5/00		
	Glycerin	56-81-5		
Jerricho Copper	Water	7732-18-5		
	Calcium Carbonate	471-34-1		
	Acacia Senegal Gum	1/5/00		
	Glycerin	56-81-5		
Helena's Blue	Mica	12001-26-2	77019	
	Titanium Dioxide	13463-67-7	77891	
	Water	7732-18-5		
	Calcium Carbonate	471-34-1		
	Acacia Senegal Gum	9000-01-5		
	Glycerin	56-81-5		
	FD&C Blue No.1	3844-45-9	42090	



Cameleon bv
 Pastoor de Beeckstraat 1
 5051 TJ Goirle
 Tel: +31 (0) 13-8899073
 www.cameleonpaint.com
 Skype: cameleonpaint
 KVK 54857686
 VAT: 851467301B01

UV Colors			
Color	Ingredients	CAS No.	CI No.
Orange UV / Sun	Not for cosmetic use, only for special effects		
	D&C Orange 5	7732-18-5	
	Calcium Carbonate	471-34-1	
	Acacia Senegal Gum	1/5/00	
	Glycerin		
	Water		
	Methylparaben	56-81-5	
Magenta Pink UV	Not for cosmetic use, only for special effects		
	D&C Red 22	7732-18-5	
	Calcium Carbonate		
	Acacia Senegal Gum		
	Glycerin	471-34-1	
	Water	1/5/00	
	Methylparaben	56-81-5	
Green UV / UFO	Not for cosmetic use, only for special effects		
	Water	7732-18-5	
	Calcium Carbonate	471-34-1	
	Acacia Senegal Gum	1/5/00	
	Glycerin	56-81-5	
Sulfur yellow UV	Not for cosmetic use, only for special effects		
	D&C Yellow 7	7732-18-5	
	Calcium Carbonate		
	Acacia Senegal Gum		
	Glycerin	471-34-1	
	Water	1/5/00	
Lili White UV	Not for cosmetic use, only for special effects		
	Water	7732-18-5	
	Calcium Carbonate	471-34-1	
	Acacia Senegal Gum	1/5/00	
	Glycerin	56-81-5	
Shocking Blue UV	Not for cosmetic use, only for special effects		
	Water	7732-18-5	
	Calcium Carbonate	471-34-1	
	Acacia Senegal Gum	1/5/00	
	Glycerin	56-81-5	



Cameleon bv
 Pastoor de Beekstraat 1
 5051 TJ Goirle

Tel: +31 (0) 13-8899073
www.cameleonpaint.com
Skype: cameleonpaint
KVK 54857686
VAT: 851467301B01

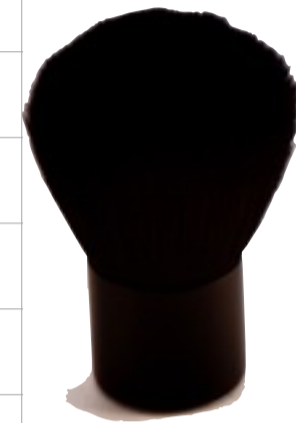
Scare Line By mr Alex Hansen

Color	Ingredients	CAS No.	CI No.
Bones / light skin			
	Water	7732-18-5	
	Calcium Carbonate	471-34-1	
	Acacia Senegal Gum	1/5/00	
	Glycerin	56-81-5	
The Dark / dark brown			
	Water	7732-18-5	
	Calcium Carbonate	471-34-1	
	Acacia Senegal Gum	1/5/00	
	Glycerin	56-81-5	
Bile / green			
	Water	7732-18-5	
	Calcium Carbonate	471-34-1	
	Acacia Senegal Gum	1/5/00	
	Glycerin	56-81-5	
Rotten / Orange			
	Water	7732-18-5	
	Calcium Carbonate	471-34-1	
	Acacia Senegal Gum	1/5/00	
	Glycerin	56-81-5	
Variouse / blue			
	Water	7732-18-5	
	Calcium Carbonate	471-34-1	
	Acacia Senegal Gum	1/5/00	
	Glycerin	56-81-5	
Clothed Blood / red			
	Water	7732-18-5	
	Calcium Carbonate	471-34-1	
	Acacia Senegal Gum	1/5/00	
	Glycerin	56-81-5	



Cameleon bv
Pastoor de Beeckstraat 1
5051 TJ Goirle
Tel: +31 (0) 13-8899073
www.cameleonpaint.com
Skype: cameleonpaint
KVK 54857686
VAT: 851467301B01

Name	Size	Sort	use
Round	00	Synthetic	Lines
Round	02	Synthetic	Lines
Round	04	Synthetic	Lines
Round	06	Synthetic	Lines
FLat Buget	1"	Synthetic	Color Block
FLat Buget	¾"	Synthetic	Color Block
FLat Buget	½"	Synthetic	Color Block
Big Round	1	Synthetic	Petal Brush
Small Kabuki	1	Synthetic	Body and Face / perfect for base painting
Flat Cameleon	1"	Synthetic	Color Block/bodybrush
Flat Cameleon	¾"	Synthetic	Color Block face children
Flat Cameleon	½"	Synthetic	Color Block little strokes
Brown Sugar	1	Synthetic	Face lines / eye make up
Brown Sugar	2	Synthetic	Face lines / eye make up
Brown Sugar	3	Synthetic	Face lines / eye make up
Round Cameleon	0	Synthetic	Line work
Round Cameleon	2	Synthetic	Line work
Round Cameleon	4	Synthetic	Line work
Round Cameleon	6	Synthetic	Line work
Stipple Brush Sponge	1	Sponge/ Synthetic	Face/ flowers/ dots/ eyeshadow
YC Blending	1	Synthetic Chisle	Blending, cattongue
YC Blending	2	Synthetic Chisle	Blending, cattongue
Matteo	1	Synthetic	Blending / shading
Matteo	2	Synthetic	Blending / shading



Sodium Palmitate Sodium Cocoate
Aqua Glycerine Parfume (fresh lime fragrance) Sodium Chloride Sodium Hydroxide Tetrasodium
EdtaWeight: 100g PAO (36m) (also in 10 grams)

How to use:

Dip your brush into the brush soap.

Rub the brush soap into the bristles.
Rub the bristles in a circular, scrubbing motion in the palm of your free hand. (Very delicate)

Once you have worked the brush soap thoroughly through the bristles,
rinse the soap from the brush under warm, running water.
It may take more than one application of soap if there is a lot of paint in the brush.

Remove excess water with a towel and allow the brushes to dry before using them again. We advise, hanging your brushes to dry, or letting them dry on a clean towel.

SP001 lemon sorbet soap

